



# Hastings Water Works

## Winter Watch Service

Thank you for allowing Hastings to keep an eye on the health of your equipment and facilities over these coming harsh winter months. The mere fact that your pool is managed will help to ensure proper operation during the high demands that the peak season will place on it.

This packet provides an update from our inspections along with pictures to show you the detail of work completed. The pictures are further augmented by checklists detailing each action taken to ensure the service has been provided. Our technicians have also provide specific recommendations for ways we can help ensure your pool is ready when things warm up again. You can find a summary of these recommendations on the last page of this packet. Thank you again and Happy Holidays!



YOUR PROPERTY NAME

YOUR PROPERTY ADDRESS

INSIDE

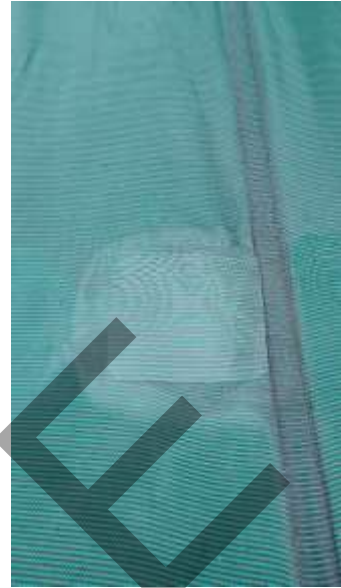
Covers, Springs, Anchors, etc. 2  
Perimeter , Pump room, etc....3  
Summary Recommendations . 4

DATE OF SERVICE

12/01/2014



## ADDITIONAL PICTURES



## COVER, SPRINGS, ANCHORS AND BAGS

### Actions Taken

- Check water level in pool make sure it's below the tile line
- Drain water level if water is above tile line to prevent possible tile damage
- Test water chemistry and adjust as needed
- Removal of excess water, leaves, and snow (when possible) from cover
- Visual cover inspection for holes/tears
- Solar reel inspection for damage
- Springs inspection for damage and tension
- Replace missing deck anchors
- Replace damaged water bags
- Check the integrity of the Safety Cover

### Recommendations

3 holes were found and patched in the safety cover.

As a precaution for future Winter Watch stops, we set up client's sump pump on the first step of the pool, in the event we need to drain any excess water from the pool.

Please note: the sump pump will need to be plugged in to an extension cord and can be set up on a timer.





#### ADDITIONAL PICTURES



### PERIMETER, GATES AND PUMP ROOM

#### Actions Taken

- Inspect perimeter fencing for holes or gaps
- Inspect self closing catching fences and gates
- Disposal of deceased rodents
- Inspect perimeter fencing for holes or gaps
- Check water level in pool make sure it's below the tile

#### Recommendations

Adjusted bond wire to make connection with pump motor.  
Need 1 bond lug to make connection with heater. (estimate to be sent separately)





#### Recommendations

Found 3 valves that are in need of new valve handle, as the existing handles are missing (estimate to be sent separately)

#### CHEMICAL READINGS

Chemical	Reading
Chlorine/Bromine	4.0
Alkalinity	50
Calcium	100
pH	6.8
Salt Level	
Cyan uric Acid	

#### Hastings Water Works

##### Cleveland

10331 Brecksville Road  
Brecksville, Ohio 44141  
Phone: 440.832.7700

##### Columbus

824 Rose Avenue  
Columbus, Ohio 43219  
Phone: 614.888.3200

[www.hastingswaterworks.com](http://www.hastingswaterworks.com)

